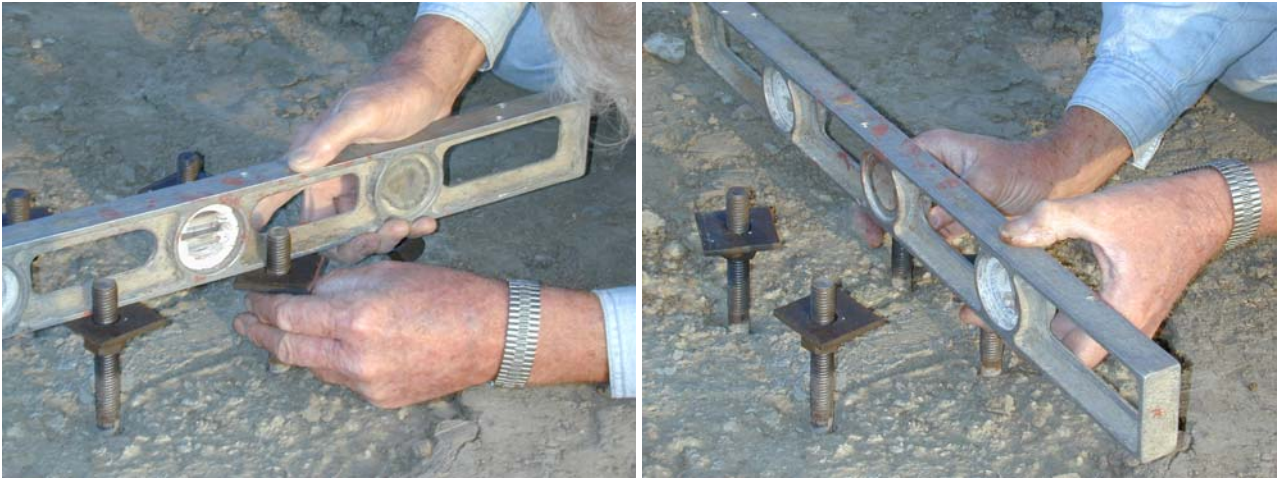


Setting The Tail And Wing Posts:

Make sure the concrete is fully set before installing the posts.

Remove the anchor template and adjust the bottom anchor nuts using a level. The bottom nuts with the square washers should be about 1 1/2" below the top of the anchor bolts and level with each other.



Set the wing post on the anchor bolts. Install the top nuts on the anchor bolts. Using a level, check to make sure the post remains standing straight when tightening the top nuts. Repeat this procedure for the other wing post.



The tail post is installed using the same procedure as the wing post, but make sure the top plate on the tail post is positioned properly. The long part of the top plate runs front to back.