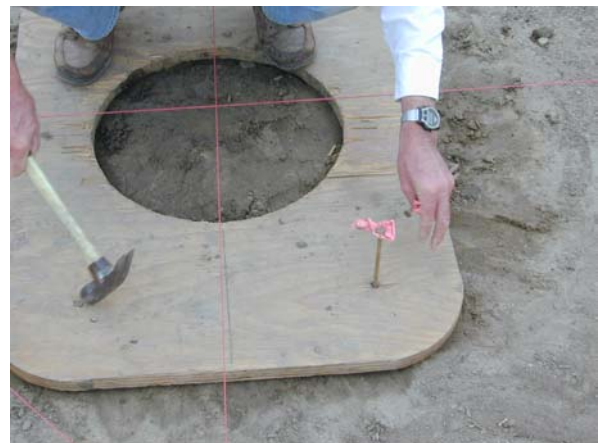
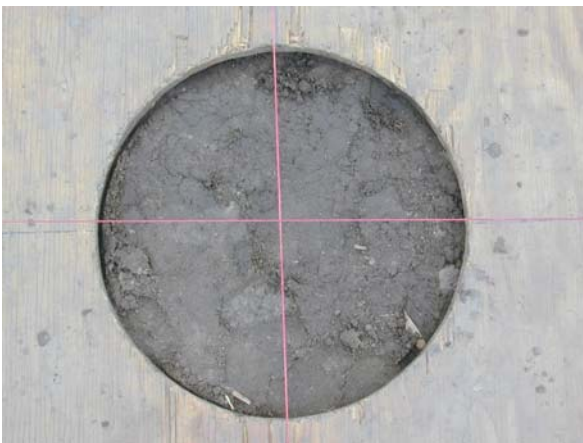


Setting The Tail And Wing Anchors:

Build a temporary form approximately 6' X 6' around each post nail. The top of the form should be approximately 4" above the ground. The post nail should be approximately in the center of the form. Stretch a string from one side of the form to the opposite side of the form. This string should cross over the center of the post nail. Stretch a second string between the other two sides of the form. Both strings must cross over the post nail. The strings should be attached to the form with screws or nails so the strings can be removed from the form and then re-attached later. When the strings are re-attached they will cross in the exact same place as they did when they crossed over the post nail. The post nails are going to be removed and the only way to know where they were is by where these two strings cross. These strings will be used to locate the center of the post ground plate at a later operation.

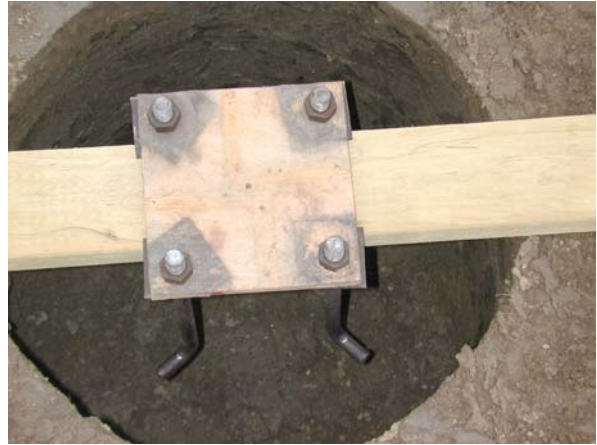


The next step is digging the holes for the concrete that the anchor bolts will be mounted in. A template is recommended, but not necessary for digging the hole in the correct location. The holes should be a minimum of 18" in diameter and a minimum of 18" deep. If you are using a template, locate it under the strings as shown and anchor the template to the ground with long nails.

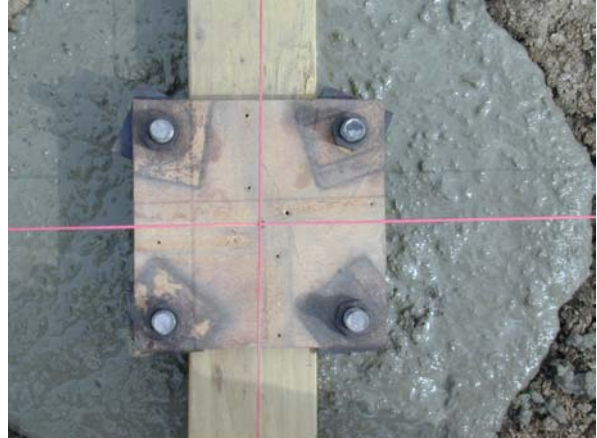


Remove the two strings from the form. Remove only the strings. Do not remove the screws or nails holding the strings. Dig the holes.

Using the ground plate jig, assemble and adjust the anchor bolts as shown. Dry fit the jig and anchor bolts over and in the hole using a 2 X 4 to support the jig.



Remove everything from the hole and fill the hole with concrete. As soon as the hole is full of concrete and while the concrete is still soft, place the 2X4 over the concrete and the anchor bolt jig assembly in the concrete. Quickly re-install the strings on the form and align the center of the jig under the strings where they cross. Adjust the rotation of the jig so it will be square with the hangar sides. All of this alignment is critical to the success of the hangar construction.



After the concrete has cured remove the forms, stakes, jigs, etc.