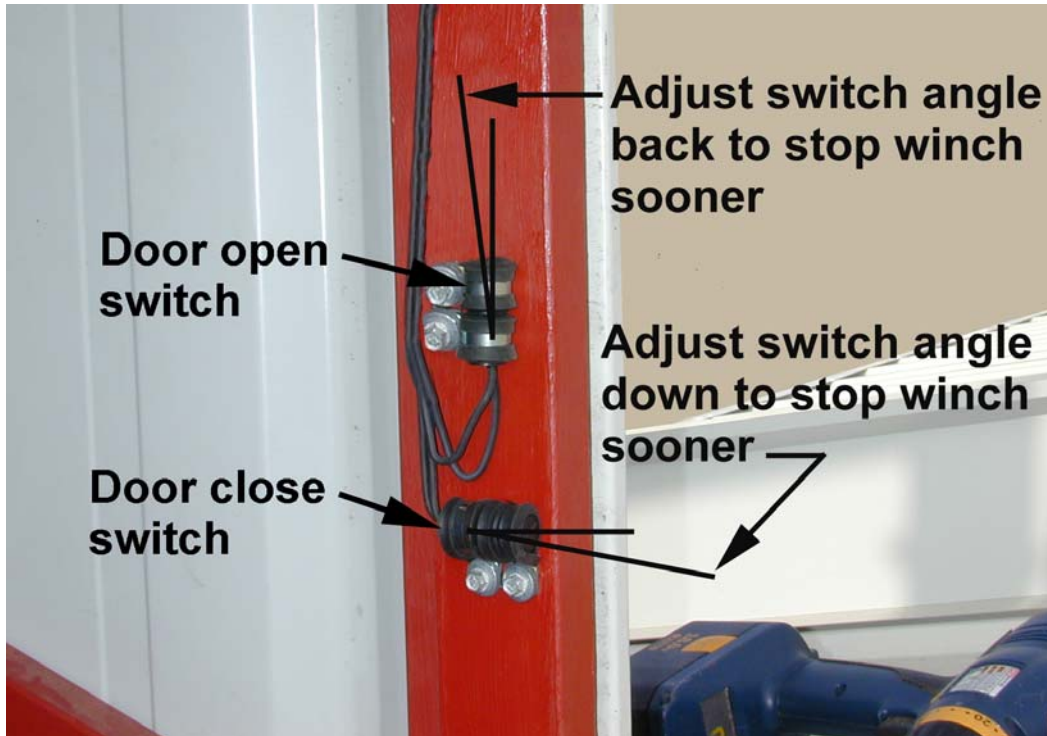


Using the winch, raise the nose door and remove the block. Close the nose door. When the door closes the winch should stop and there should be very little slack in the cable. If there is too much slack in the cable adjust the door close switch as follows:

Loosen the two screws that hold the switch in place. To stop the winch sooner, adjust the angle of the door close switch. If the door opens to far adjust the angle of the door open switch. Adjust switch angle as shown.



Attaching The Wing Door Draglinks

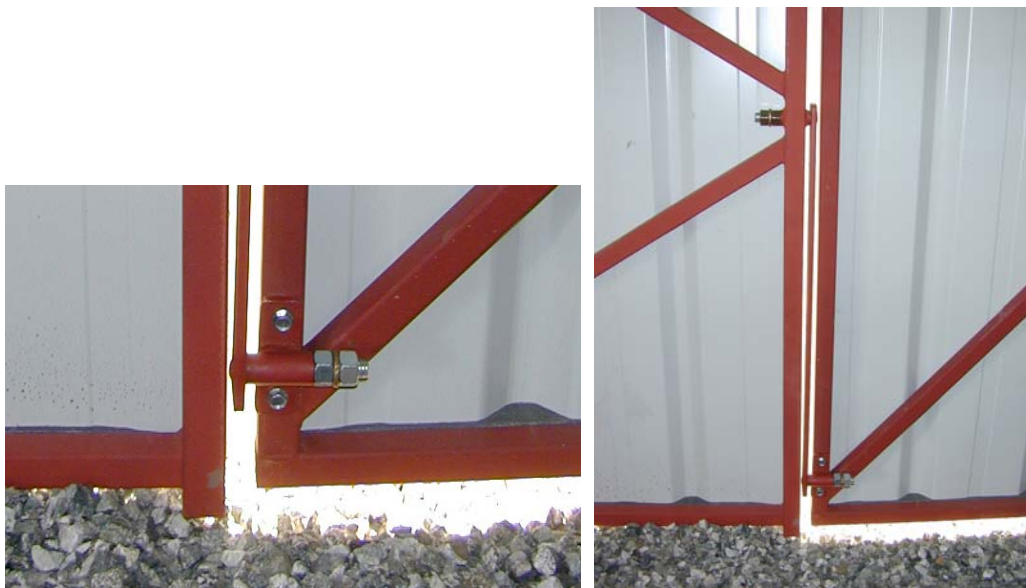
After adjusting the switches and the winch cable it is time to install the wing door draglinks. Open the door as shown. Put grease on the draglink bolt and install the bolt in the bearing hole on the nose door frame. Install a nut on the bolt and adjust it so the draglink swings freely, but does not have excess end play. Set this adjustment by installing and tightening a jam nut.



Pull the loose end of the draglink inside and behind the wingdoor frame. Lube the bolt on the free end of the draglink and install the wingdoor bearing assembly on the draglink. Install a nut, adjust it, and install and tighten the jam nut.



Close the nosedoor and screw the wingdoor bearing assembly to the wingdoor frame.



Attach the nosehouse corner braces on the bottom of the frame using #14 self-tapping screws. The braces should be set at approximately 45 degrees.

