

Assembling The Wing And Tail Trusses:

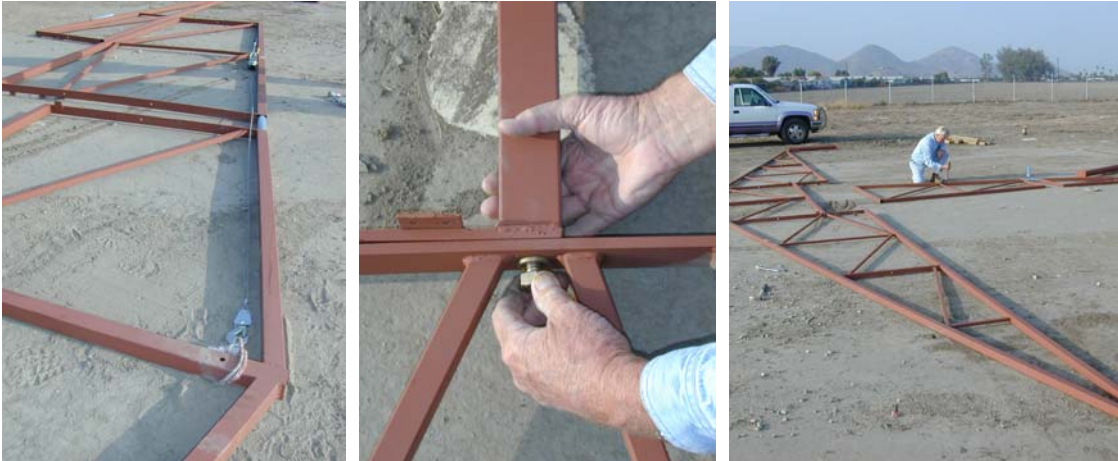
Lay the truss sections on the ground in the approximate location they will be when they are in the final assembly.



Each truss section is joined using a 2" diameter tube and two or three 1/2" diameter bolts. First, lube the tube with White Lithium Grease. Using a hammer, start the round tube into one of the square tubes of a truss section. Next, align the mating truss section with the round tube and using a block and tackle, cable puller or some other mechanical advantage, slide the two truss sections together. Using the supplied 1/2" diameter bolts, secure the truss sections to each other.



Assemble the remaining wing, center and tail truss sections using this same procedure. **When attaching the wing trusses to the center truss, make sure to use only the special high tensile strength 5/8" diameter bolts provided.**



Using boards and c-clamps set the wing truss assembly upright at the approximate angle shown. Using at least two people, lift the front of the tail truss and move it into position. While one person holds the tail truss in position the other can install the 5" long, 1/2" diameter bolts and nuts. When both bolts are tightened down, the assembly is stable.



Painting The Truss Assembly:

Now is a good time to paint the truss assembly because it's easy to reach everything. After the truss assembly is mounted on the wing and tail posts, the peak of the trusses is about 11' above the ground. Both spray painting and brush painting have produced good looking finishes.

